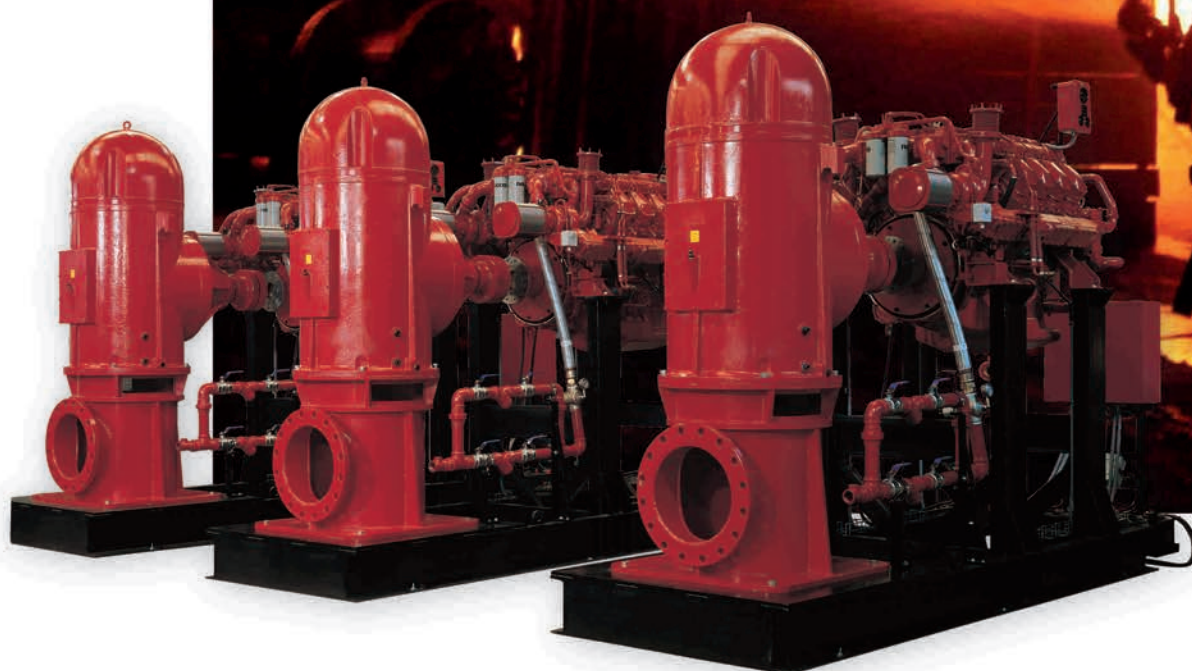


bombas **IDEAL**

FIRE FIGHTING PACKAGES



UNE 166.002

BUREAU VERITAS
Certification



ISO 14001

BUREAU VERITAS
Certification



ISO 9001

BUREAU VERITAS
Certification



A Leader's Response



Bombas Ideal S.A. has been manufacturing pumps since 1902. Throughout this period, the most advance technology available has been used in the design and manufacture of our products to obtain the highest levels of efficiency and quality which has resulted in its products being found all over the five continents.

Bombas Ideal has provided large amount of fire fighting packages in recent decades. Our long experience make us a leader in this sector around Europe and Worldwide.

Bombas Ideal, on his commitment to be always at the service of his clients, offers a complete family of horizontal and vertical pumps for fire fighting packages complying with NFPA 20, EN, UNE and CEPREVEN standards.

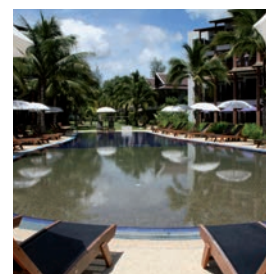
Bombas Ideal has always recognised the importance of developing new products and the continuous improvements of the existing product range. Our accreditation and implementation of UNE-EN 166002: 2006 for (R&D&I) "Research, Development and Innovation in centrifugal pumps and pump sets", together with ISO 9001: 2008 for "Design, manufacturing, sale and after-sale service of centrifugal pumps, single and multi stage, pressure sets and fire fighting sets", are essential tools in the Company's constant search for quality and innovation.



User's list:

Prat Airport Control Tower
Carrefour Logistic Center
Guggenheim Museum
Sagrada Familia Hospital
Harbour of Valencia
Cervantes Education Institute
La Rosaleda Stadium (Málaga C.F.)
Bullring of Granada
Toyota Factory

Omar Industries
Ubesol Industries
Texnovo Industries
Melia Iberia Hotel
Sunwing Hotel
García Carrión
Media Markt
Marbella Club
PTT (Rayong)



Main Pumps

Equipment with horizontal pumps

BOMBAS IDEAL RNI pumps are manufactured in accordance with DIN 24255. The wearing parts in contact with the pumped water are manufactured in corrosion resistant materials the impeller and wear rings are made of bronze and the pump shaft is stainless steel.

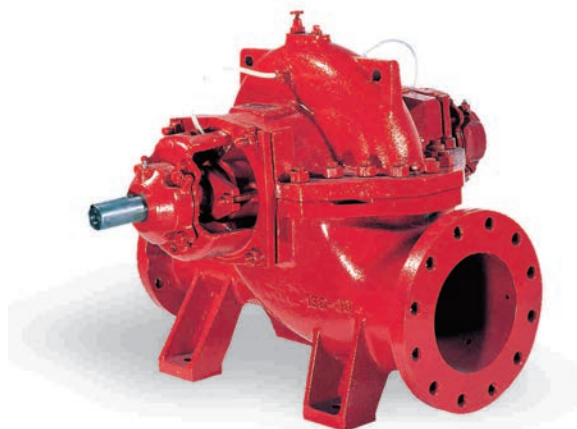
The semi-elastic spacer coupling is fitted to both electric and diesel driven pumps; this allows the impeller assembly to be removed without the need to move the pump casing or the driver.

The design of the pump casing is such that an air release device is unnecessary.



Equipment with Split Case pumps

BOMBAS IDEAL CP pumps can be fitted as the main pump for fire fighting equipment. Their main area of application is for large flows and operating pressures up to 15 bar. These are horizontal centrifugal pumps with axially split cases. The suction and discharge flanges are casted as part of the bottom half of the casing, allowing easy access to the rotating parts and avoiding disconnecting of the suction and discharge pipes during maintenance works. Both pump types can be driven by either electric motor or diesel engine as required. The CEPREVEN and UNE-EN 12845 version is fitted with a semi-elastic spacer coupling to facilitate maintenance of the pump set. These pumps are fitted with an automatic air release valve on top of upper half casing.



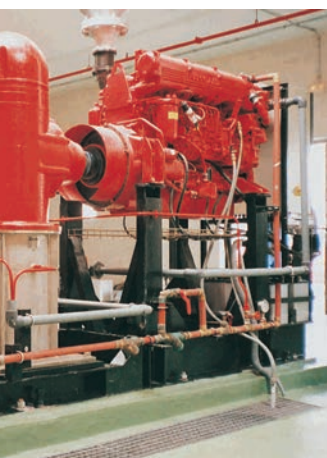
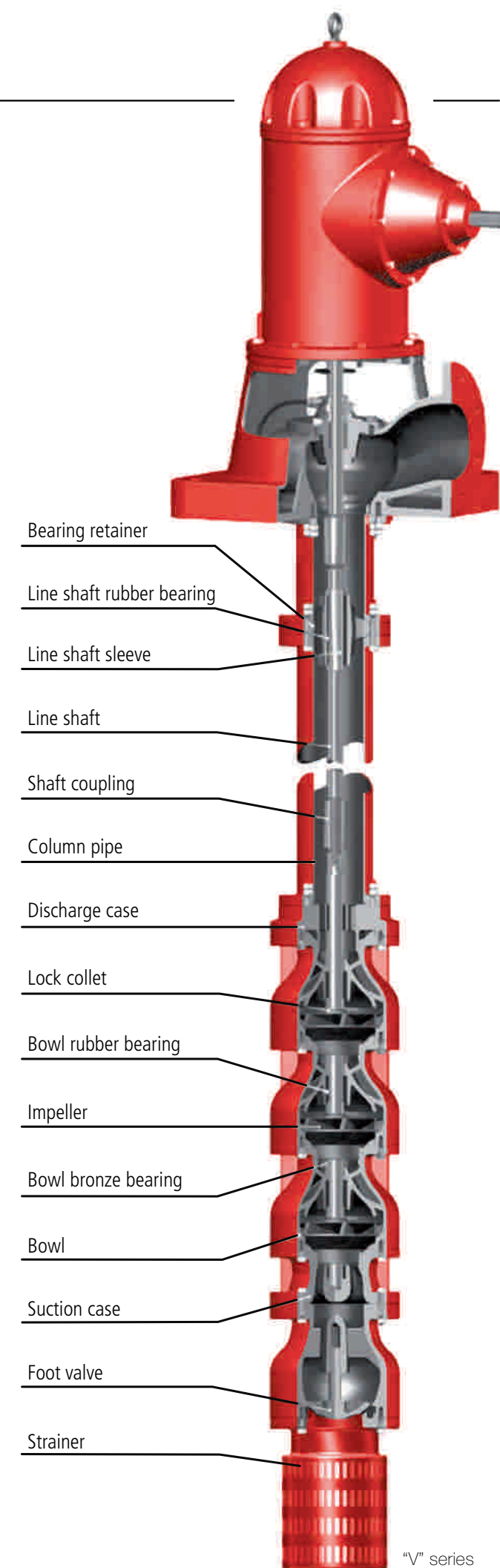
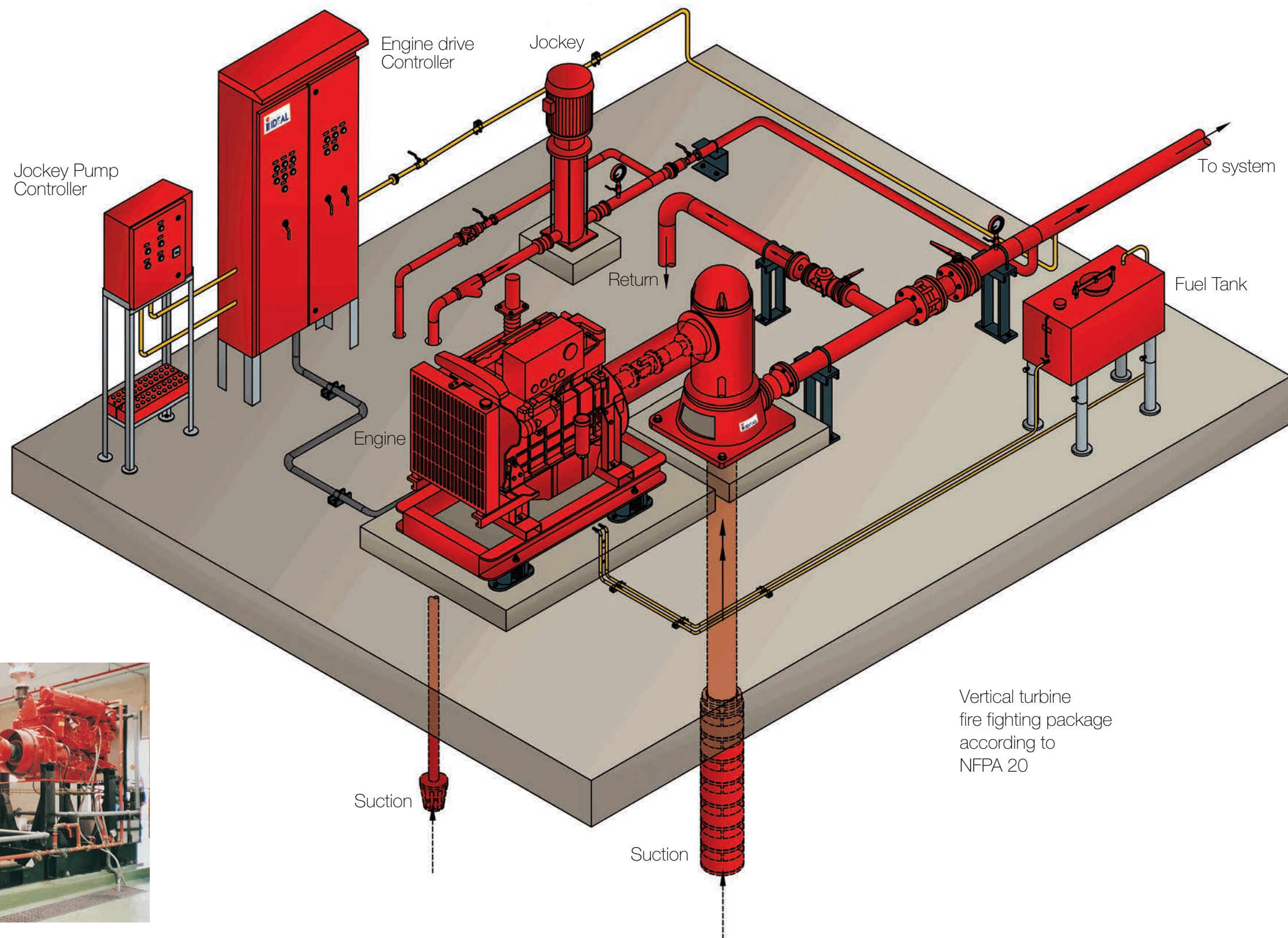
Equipment with vertical turbine pumps

Where the water level of the source supply results in a suction lift, preventing the use of horizontal pumps, BOMBAS IDEAL can offer a wide range of vertical turbine shaft driven pumps V type with motors mounted at ground level.

All these designs are highly suitable for fire-pump sets in accordance with standards, NFPA 20, EN, UNE, CEPREVEN, etc.



Bombas Ideal has large experience in Fire Fighting Vertical Packages since 1910



Jockey pump

The jockey pump is a small vertical multistage pump, which is used for maintaining the fire fighting system under pressure. The starting and stopping are automatically controlled by means of pressure switches.

The main task is to prevent the start of the main pumps due to small leakage in the pipe system.



Controllers

Engine drive controller

The controller is used for starting and controlling the diesel engine and main pump.

The main function is to guaranty the start of the diesel pump in the event of fire. All the alarms are for information purposes only.



NFPA 20

Electric drive controller

It is used for starting and controlling the operation of the electric main pump and does not incorporate any control for the diesel pump. It can also include the controls for the jockey pump depending on the standard applied.

Jockey pump controller

The controller takes care of maintaining the system pressure in order to start up the jockey pump as needed.



NFPA 20



NFPA 20

Fire Fighting Packages - Standards

NFPA 20

USA Standard for the Installation of Stationary Pumps for Fire Protection.

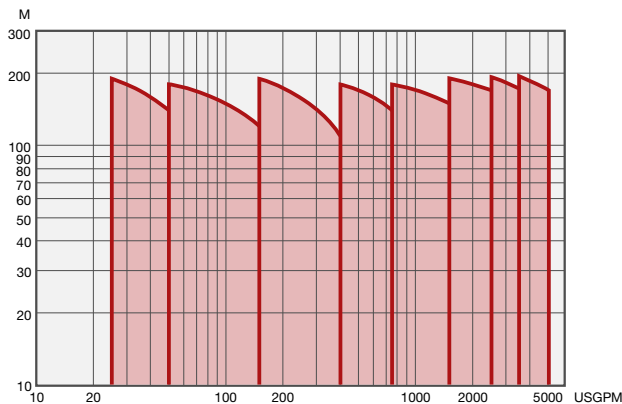
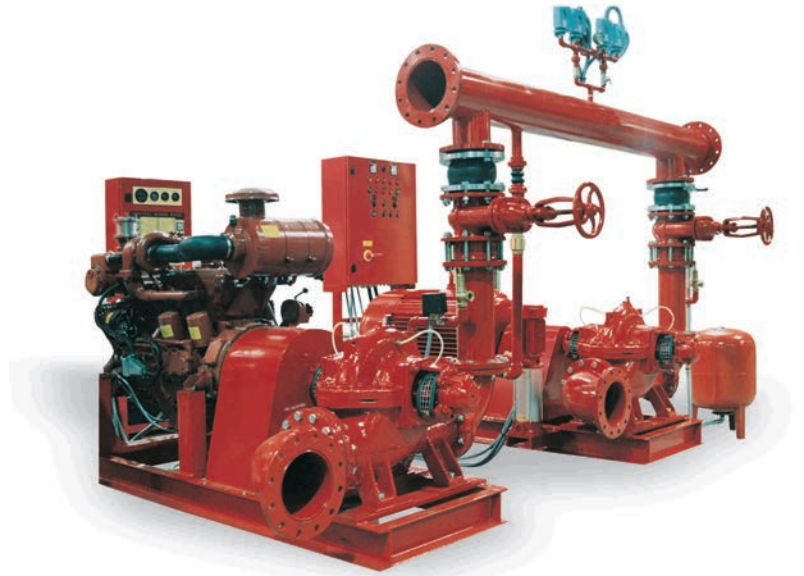
Most of the countries that provides fire fighting packages must comply with the regulations issued by the National Fire Protection Association. Bombas Ideal designs the fire fighting packages according to NFPA 20 specifications to meet the strict standards and at the same time ensuring cost effective solutions.

Bombas Ideal fire fighting packages cover the full NFPA 20 range as follow:

Rated capacities: from 25 to 5000 USGPM.

Rated pressures: from 70 to 190 M.

Other duty points are available under request.



EN 12845

Fixed fire fighting systems. Automatic sprinkler systems. Design, installation and maintenance. Reinforced fullfilment on all european countries.

UNE 23-500

Water supplies systems for fire fighting.

Reinforced fullfilment on Spain.

CEPREVEN R.T.2.-ABA

Water supply for fire fighting systems.

Requested by main insurance companies.

CEPREVEN R.T.1.-ROC

Fixed fire fighting systems. Automatic sprinkler systems.

Design, installation and maintenance.

Requested by main insurance companies.



Compact fire fighting packages with electric and diesel close coupled pumps

Small sets up to 30 HP according to UNE 23500-90 standard, consisting of main electric driven pump, jockey pump, pressure tank, controller, pressure switches and pressure gauge, everything assembled on common base plate. FOC-F sets are designed with horizontal monoblock main pumps and FOC-V type with multistage vertical pumps

In both cases the equipment can be complemented with a diesel pump as per service data required. Also include controller with automatic starter according to UNE 23500-90.

Typical applications

Condominiums
Small industries
Hotels and restaurants
Public buildings
etc...



Bombas Ideal, S.A.

Pol. Ind. Mediterráneo. Calle Cid, 8
Teléfono: + 34 96 140 2143
Fax: + 34 96 140 21 31
46560 - Massalfassar - (Spain)
exporta@bombasideal.com
www.bombasideal.com